



Welcome to the Spring Term Newsletter!

This term's edition has a special feature from Sam Merry, our Lemurs teacher. She speaks about the amazing things they have been doing in their class since it opened in September 2023. From June 2024, we will split the class in half and create a new "Toucans" group with our very own Laura Weightman leading. This is due to growth in learner numbers so it's great to see the activities and approach within the provision we already have in place.

We also feature a section by Leigha Douglas, our curriculum manager, on how we support children with their Social, Moral, Spiritual and Cultural development.

I wish you and your family a lovely break over the Easter period as the weather starts to warm.

Bradley Rowley, Head Teacher, March 2024

NEWS IN BRIEF

Kindly Reminders

- Please remember to report your child's absence by 8am each morning of absence. This is via the school voicemail service on **02475 901051 (Option 1 then 1)**.
- We expect all our learners to come dressed in our **school uniform** which is a plain bottle green sweatshirt, a white polo shirt, black or grey trousers/skirt and black shoes/trainers. During summer months, learners can wear black or grey shorts or a summer school pleated dress.

SEND Local Offer

The SEND local offer brings together information about the local services and support available across education, health and social care for families with children who have special educational needs and/or disabilities.

Please find your local authority's page below:

<https://www.warwickshire.gov.uk/send>

<https://www.coventry.gov.uk/directory/86/send-local-offer-for-coventry>

<https://www.leicestershire.gov.uk/education-and-children/special-educational-needs-and-disability/where-to-start-with-send/what-is-the-local-offer>

<https://families.leicester.gov.uk/send-local-offer/>

Social Media

Please like, comment and follow us on our Facebook page for lots more stories

@ALPNUNEATON



Recent posts include:

Number Day Madness

Safer Internet Day

Children's Mental Health Week

Feel free to share this with friends and family!

Coffee Mornings

Following parents' feedback in our survey, we are introducing termly parent/carers coffee mornings.

These are to provide key information, build our parent community and give you an informal space to talk. The first event will take place on **Tuesday 30 April at 10:30am** and will feature a short presentation from **Jess Harris**, our **Speech and Language Therapist**.

Please come along to find out more.



Special Feature - Lemurs Class @ ALP Nuneaton



In September, we welcomed a new group of learners into our school community, and together, we formed Lemurs class. Our class is immersed in our Rainforest curriculum pathway, placing a special emphasis on "communication." For us, **communication isn't just a lesson—it's the heartbeat of our classroom.** It's what allows our learners to express themselves, engage with others, navigate challenges, and grow emotionally. It's the thread that weaves through every aspect of our educational journey, guiding us as we explore, learn, and evolve together.

We've embarked on a journey of discovery through a rich variety of topics. We started with 'all about me,' a journey of self-exploration that encouraged each child to **embrace their uniqueness, share their interests, and celebrate their individuality.** It also helped them understand that everyone is different and special in their own way. Currently, we're diving headfirst into the fascinating realm of "planet Earth," where we're exploring the wonders of our world and the changing seasons that shape it.

However, learning doesn't just happen within the four walls of our classroom. Lemurs class has been buzzing with activity outside of regular lessons. From weekly visits to **Nuneaton Gymnastics Club and Spencer's farm retreat** and a memorable school trip to the **"Snowdome" in Tamworth**, our learners have been on a whirlwind of adventures. They've also had the opportunity to participate in various enrichment activities, including **careers week, world book day, ALP Good Celebration, number day** and our **exciting STEAM event.** Furthermore weekly Music sessions delivered by **Warwickshire Music Hub.**



Our mission is clear: to create a **nurturing, inclusive environment** where every child feels valued and empowered. We blend structured lessons with hands-on activities and play based learning. Our ultimate goal is to foster and cultivate a lifelong love for learning in each and every one of our learners.

If you ever have any questions or simply want to learn more about what we're doing in Lemurs class—or anything else related to your child's education—please don't hesitate to reach out. We're here to support you and your child every step of the way on this incredible journey of learning and discovery.



Sam Merry, Lemurs Teacher

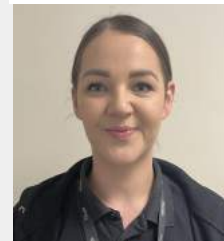
Laura Weightman, Toucans Teacher (June 2024)

Spiritual, Moral, Social and Cultural (SMSC) Development @ ALP Nuneaton (By Leigha Douglas)

Spiritual, Moral, Social and Cultural (SMSC) Development is the overarching umbrella that encompasses our own school values, Fundamental British Values (FBV) and supporting pupils in their personal development, helping and guiding them to become responsible, reflective and active citizens.



SMSC is at the heart of our school development. Teachers and Subject Leaders actively plan for the development of SMSC within their classrooms and within the carefully planned curriculum for the subjects. At ALP Nuneaton, our vision is to **shape students who are reflective, empathetic, curious and ambitious**; who will make positive contributions to their immediate and wider community, both now and in life beyond school.



How do we do this? Please see examples of how we develop learners SMSC skills in the school day:

<p>Social</p> <ul style="list-style-type: none"> • The opportunity to join in with shared stories and rhymes. • The opportunity to see themselves represented in stories and rhymes. • Provide a stimulus for communication. • Supporting communication development 	<p>Moral</p> <ul style="list-style-type: none"> • Exploring and analysing appropriate texts which gives them the knowledge and ability to question and reason and develop their own value system. • Texts are selected that extend students' ideas and their moral and emotional understanding.
<p>Spiritual:</p> <ul style="list-style-type: none"> • To promote learners' spiritual development, their sense of self and their motivation to achieve. • Supporting students to gain confidence to work independently while understanding that their work will contribute to a "bigger project" • Peer collaboration in computing can develop a wide range of skills such as working with others, cooperation, listening, and leadership. 	<p>Cultural:</p> <ul style="list-style-type: none"> • Explore how scientific knowledge and practices are influenced by different cultures, traditions, and historical contexts. • Celebrate diversity by incorporating examples from a range of cultural backgrounds in science lessons, highlighting how different cultures contribute to our understanding of the natural world.

In addition to this, as a school we celebrate a range of **enrichment days** that support children in understanding and respecting various cultures, teachings and practices:

1st March: Guardians Grow Charity: Learners will have taken part in growing sunflowers in the hopes to win a prize in partnership with Guardians Grow Charity located in Nuneaton.

4th - 9th March - Careers Week: Learners have engaged in a range of activities that have immersed children in the world of careers for example; Key Stage 3 learners have explored the application and interview process, and Key stage 1 learners have explored different types of careers they might see in their day to day lives, and those that they might not! **Pictured is Josh who Bradley interviewed and was successful for our "cook" position!**



11th - 22nd March: The Big Legal Lesson: Learners have engaged in activities that have helped them to understand that the law is a vital part of our democratic society. Understanding how it works is essential to being an active and engaged citizen.

12th March: Ramadan Month: Learners have learned all about Ramadan and what it means to Islamic Faith. Some of our staff members who celebrate have spoken to the classes about what cultural and religious practices they engage in with their families and community.

14th March: STEAM Event: Learners across both Nuneaton and Leicester took part in an immersive day filled with exciting activities from Science, Technology, Engineering, Art and Mathematics. We also had a visitor from Meggitt Aerospace who spoke about what it is like to work in Aerospace Engineering.

